

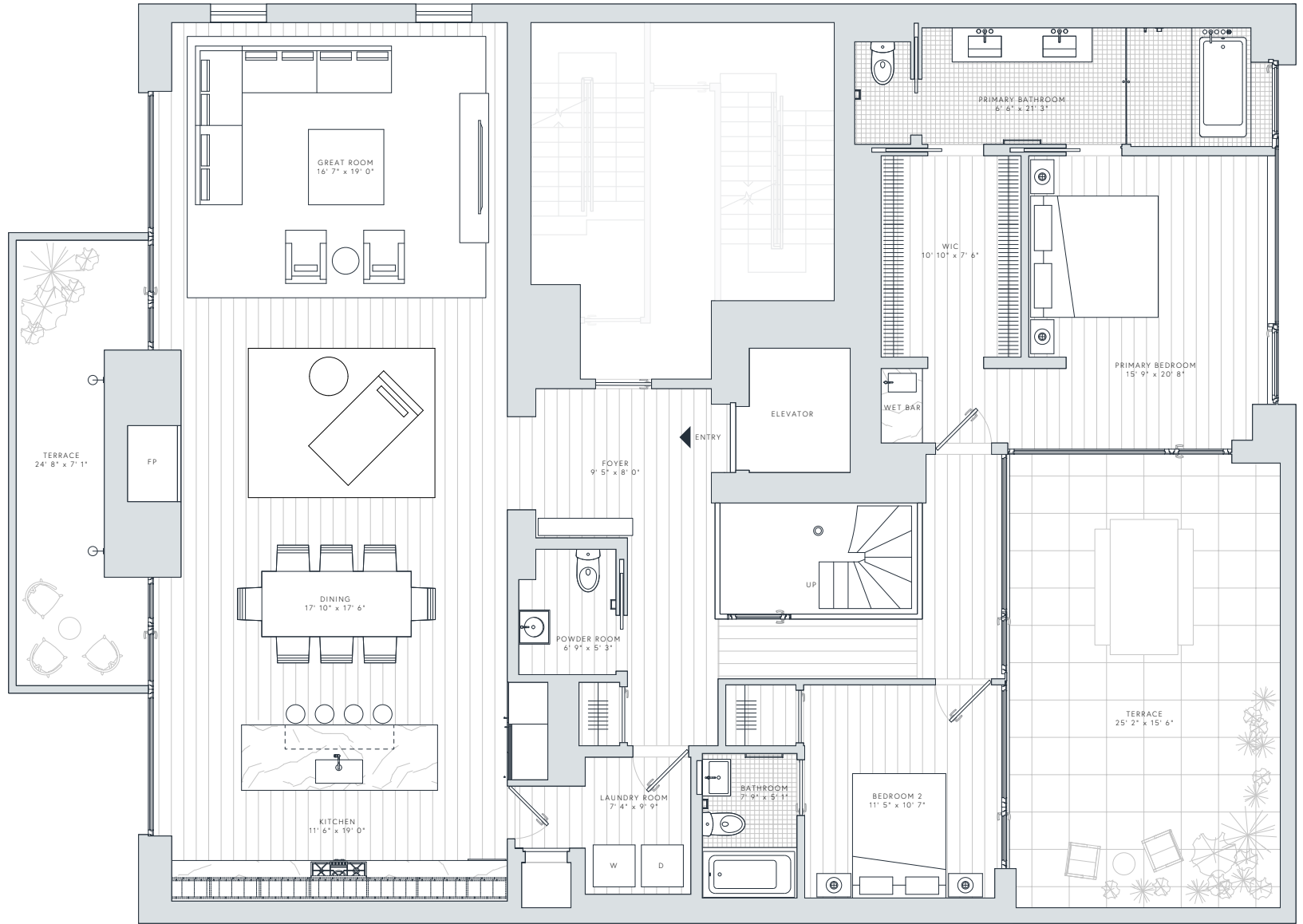
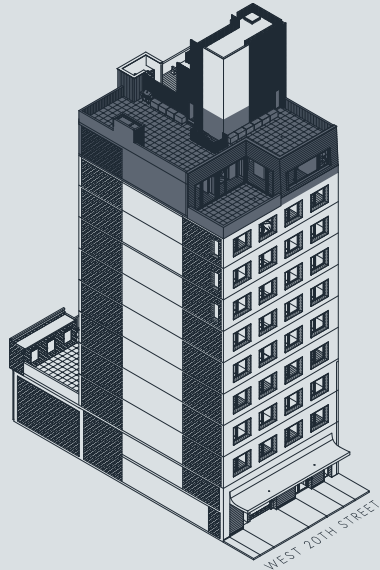
5
3
W20

PENTHOUSE
LOWER LEVEL

2 BEDROOMS | 2.5 BATHROOMS
INTERIOR: 2,322 SQ FT | 215.7 SQ M
EXTERIOR: 1,869 SQ FT | 173.6 SQ M

FEATURES

- 11' ceilings
- Floor-to-ceiling windows with North and South exposures
- Direct elevator entry into private foyer
- Great room with fireplace feature
- Primary bedroom with walk-in closet and primary bath with freestanding soaking tub
- Laundry room with Miele washer/vented dryer
- Three outdoor terraces
- Rooftop BBQ and exterior fireplace



532 WEST 20TH STREET, NEW YORK, 212-581-3151, 532W20.COM

ollog™  DouglasElliman **THE SHEMESH TEAM**
AT DOUGLAS ELLIMAN REAL ESTATE

The complete offering terms are in an offering plan available from the Sponsor. File No. CD20-0067. The artist representations and interior decorations, finishes, appliances and furnishings are provided for illustrative purposes only. Sponsor makes no representations or warranties except as set forth in the Offering Plan. Sponsor reserves the right to substitute materials, appliances, equipment, fixtures and other construction and design details specified herein with similar materials, appliances, equipment and/or fixtures of substantially equal or better quality. All dimensions are approximate and subject to normal construction variances and tolerances. Square footage exceeds the usable floor area. Sponsor reserves the right to make changes in accordance with the terms of the Offering Plan. Plans and dimensions may contain minor variations from floor to floor. The use of any designations, labels or nomenclature is for marketing purposes only and does not obligate Sponsor to deliver such areas or rooms designed or fitted out in the manner depicted or implied in this advertising. Sponsor: DDG 532 West 20th Street LLC, 375 Hudson Street, 12th Floor, New York, New York 10014.

5
3
W20

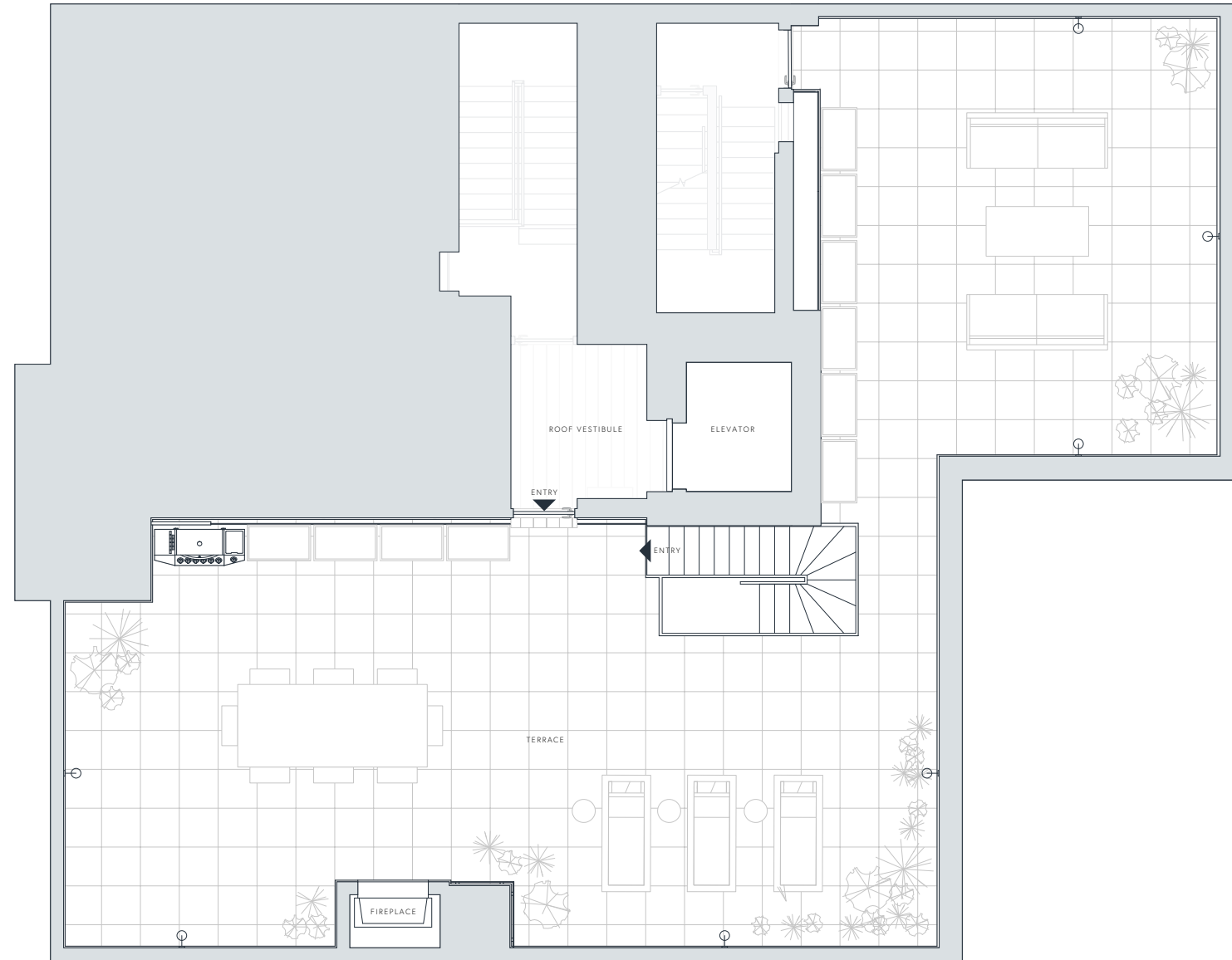
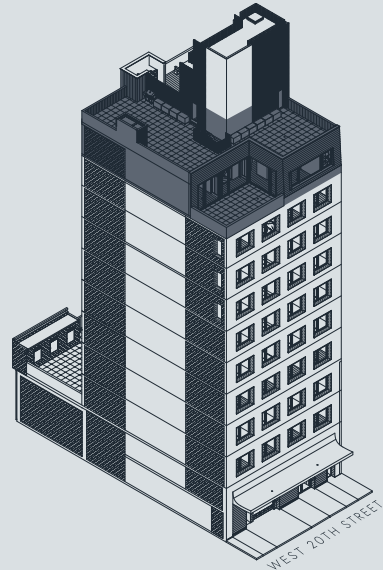
PENTHOUSE

UPPER LEVEL

2 BEDROOMS | 2.5 BATHROOMS
INTERIOR: 2,322 SQ FT | 215.7 SQ M
EXTERIOR: 1,869 SQ FT | 173.6 SQ M

FEATURES

- 11' ceilings
- Floor-to-ceiling windows with North and South exposures
- Direct elevator entry into private foyer
- Great room with fireplace feature
- Primary bedroom with walk-in closet and primary bath with freestanding soaking tub
- Laundry room with Miele washer/vented dryer
- Three outdoor terraces
- Rooftop BBQ and exterior fireplace



1FT 5FT 10FT



532 WEST 20TH STREET, NEW YORK, 212-581-3151, 532W20.COM



THE SHEMESH TEAM
AT DOUGLAS ELLIMAN REAL ESTATE

The complete offering terms are in an offering plan available from the Sponsor. File No. CD20-0067. The artist representations and interior decorations, finishes, appliances and furnishings are provided for illustrative purposes only. Sponsor makes no representations or warranties except as set forth in the Offering Plan. Sponsor reserves the right to substitute materials, appliances, equipment, fixtures and other construction and design details specified herein with similar materials, appliances, equipment and/or fixtures of substantially equal or better quality. All dimensions are approximate and subject to normal construction variances and tolerances. Square footage exceeds the usable floor area. Sponsor reserves the right to make changes in accordance with the terms of the Offering Plan. Plans and dimensions may contain minor variations from floor to floor. The use of any designations, labels or nomenclature is for marketing purposes only and does not obligate Sponsor to deliver such areas or rooms designed or fitted out in the manner depicted or implied in this advertising. Sponsor: DDG 532 West 20th Street LLC, 375 Hudson Street, 12th Floor, New York, New York 10014.